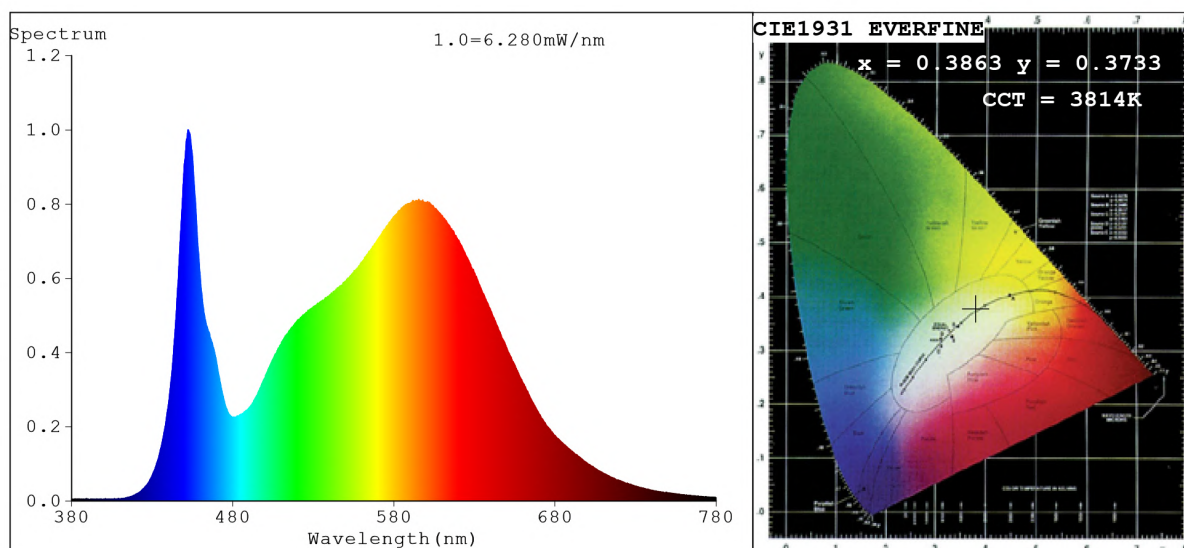


Spectrum Test Report



Color Parameters:

Chromaticity Coordinate: $x=0.3863$ $y=0.3733$ $u'=0.2304$ $v'=0.5009$
 CCT=3814K (Duv=-0.0033) Dominant WL:Ld =581.6nm Purity=28.0%
 Ratio:R=19.3% G=77.1% B=3.6%; Peak WL:Lp=452.3nm FWHM=17.9nm
 Render Index:Ra=83.6 CRI=77.5 TM30:Rf=81 Rg=96 Lav=572.4nm
 R1 =83 R2 =92 R3 =95 R4 =81 R5 =83 R6 =87 R7 =84
 R8 =63 R9 =11 R10=79 R11=80 R12=63 R13=85 R14=98 R15=77

Photo Parameters:

Flux = 278.9 lm Eff. : 27.35 lm/W Fe = 853.0 mW Scotopic:462.74 S/P:1.659

Electrical parameters:

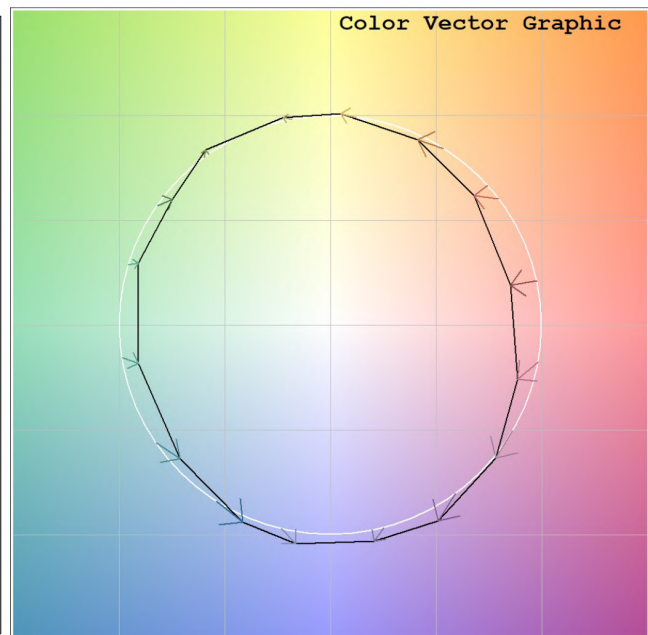
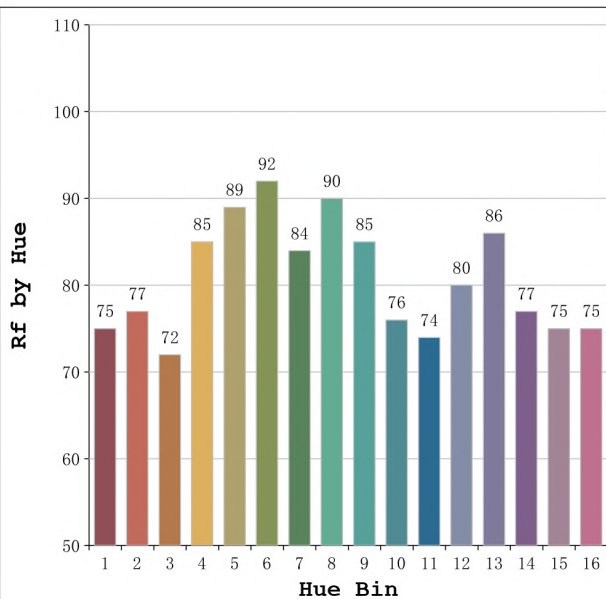
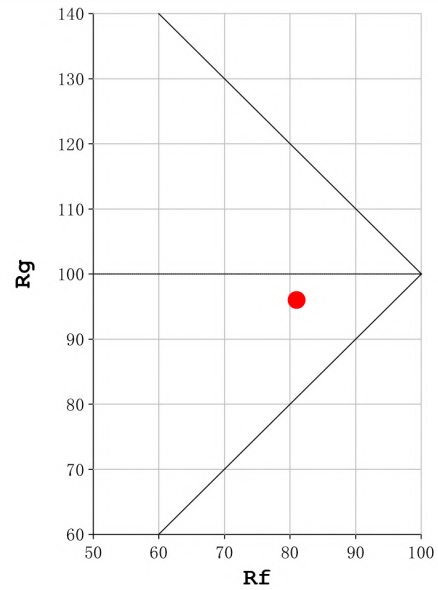
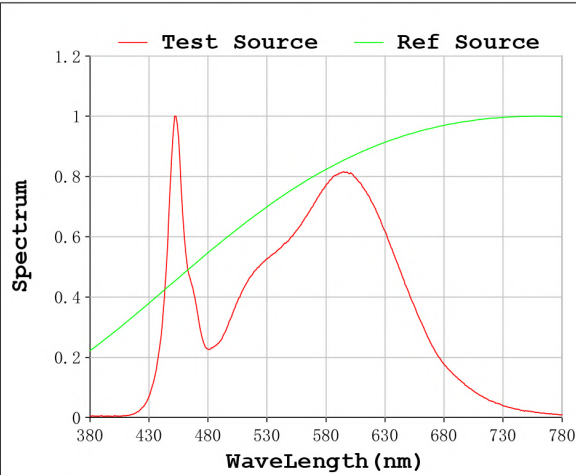
V = 23.998 V I = 0.4249 A P = 10.20 W PF = 1.000

Status: Integral T = 4884 ms Ip = 51571 (79%)

Model:Neón Sing 4000K
 Tester:Sergio Carneros
 Temperature:27Deg
 Manufacturer:Luz Negra

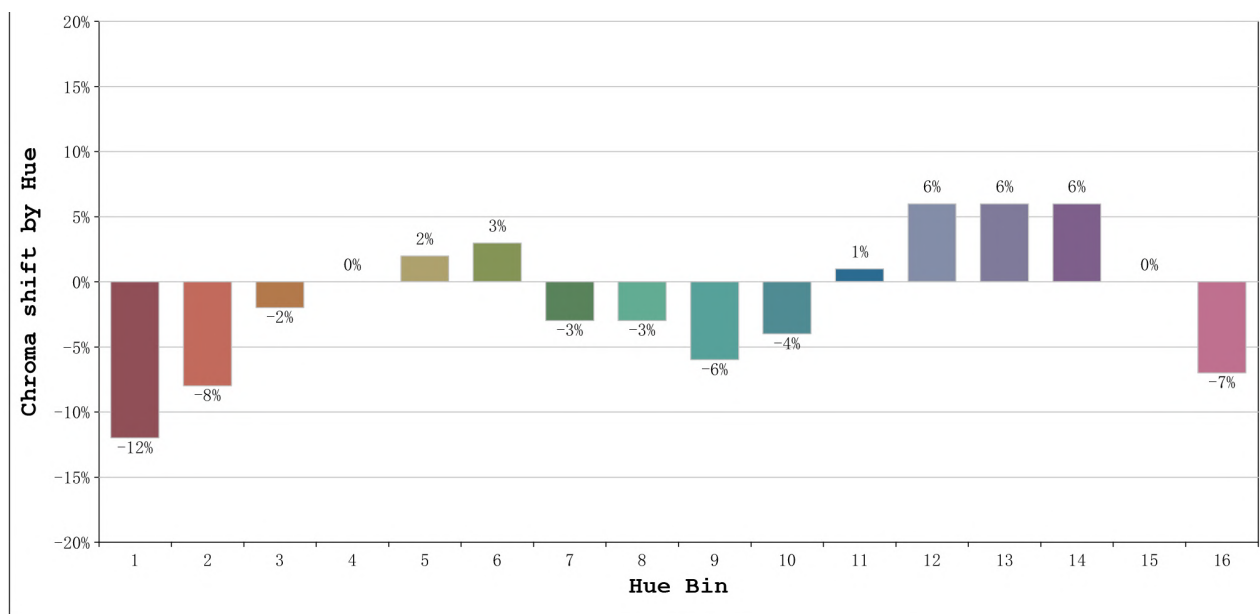
Number: 10.256
 Date:2023-11-30 09:22:08
 Humidity:35%
 Remarks:Neón de 100cm

Rf: 81 **CCT: 3814 K** **u': 0.2304**
Rg: 96 **Duv: -0.0033** **v': 0.5009**



Model:Neón Sing 4000K
 Tester:Sergio Carneros
 Temperature:27Deg
 Manufacturer:Luz Negra

Number: 10.256
 Date:2023-11-30 09:22:08
 Humidity:35%
 Remarks:Neón de 100cm



			Graphic shift(%)	
Hue Bin	Hue Angle	Rf	Chroma	Hue
1	0.0° - 22.5°	75	-12	0
2	22.5° - 45.0°	77	-8	8
3	45.0° - 67.5°	72	-2	13
4	67.5° - 90.0°	85	0	7
5	90.0° - 112.5°	89	2	4
6	112.5° - 135.0°	92	3	-2
7	135.0° - 157.5°	84	-3	-5
8	157.5° - 180.0°	90	-3	-1
9	180.0° - 202.5°	85	-6	4
10	202.5° - 225.0°	76	-4	13
11	225.0° - 247.5°	74	1	16
12	247.5° - 270.0°	80	6	8
13	270.0° - 292.5°	86	6	-5
14	292.5° - 315.0°	77	6	-13
15	315.0° - 337.5°	75	0	-14
16	337.5° - 360.0°	75	-7	-9

Model:Neón Sing 4000K
 Tester:Sergio Carneros
 Temperature:27Deg
 Manufacturer:Luz Negra

Number: 10.256
 Date:2023-11-30 09:22:08
 Humidity:35%
 Remarks:Neón de 100cm